

A PARENT TUTORIAL

Understanding 2017 PSAT/NMSQT Results

A Case Study: Ima B. Student's PSAT/NMSQT Score Report

Take a look at Ima B. Student's sample score report below and on the back. Use the information to help you interpret your student's PSAT/NMSQT® Score Report.

What Are Ima's Scores?

Ima's Evidence-Based Reading and Writing score is 430, and her Math score is 530. In Evidence-Based Reading and Writing, Ima's score is approaching the benchmark (explained on the report), but she is not quite on track for college readiness. In Math, however, Ima is exceeding the benchmark and is on track. Test scores, cross-test scores, and subscores can give Ima a better understanding of areas to work on.

What Are Ima's Score Percentiles?

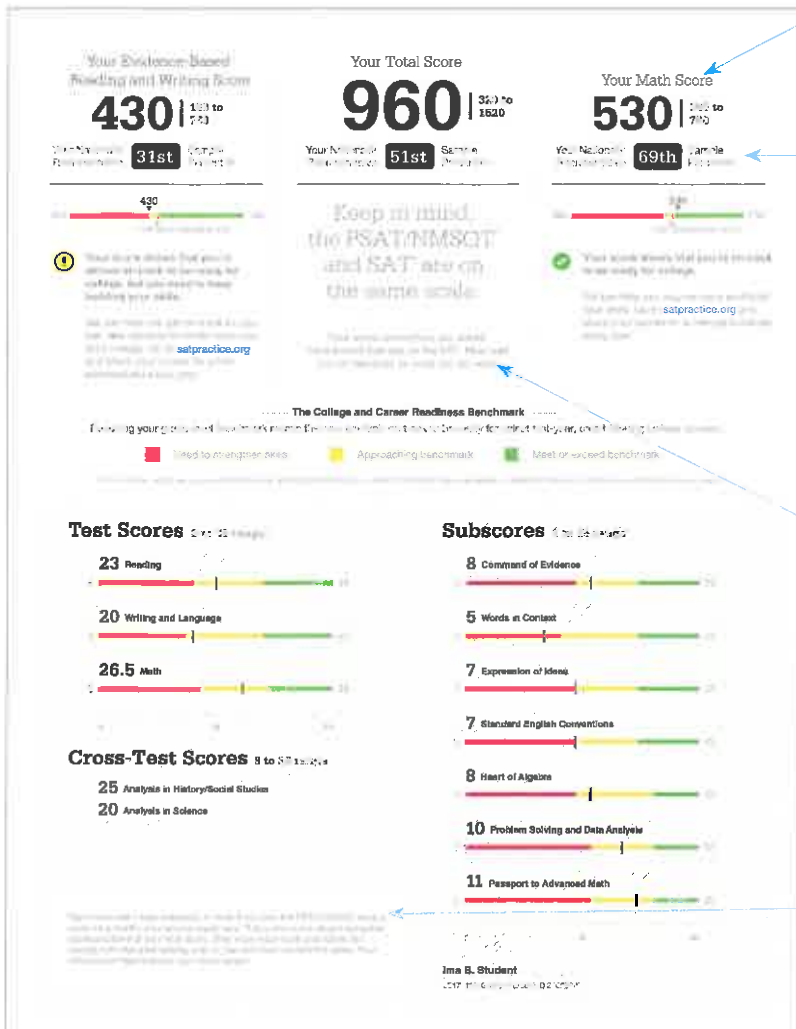
Since Ima is in the 11th grade, the percentiles compare her scores with those of all 11th graders in the nation. Ima scored as well as or better in Evidence-Based Reading and Writing than 31% of a nationally representative group of juniors. In Math, she scored as well as or better than 69% of a nationally representative group of juniors. Additional percentiles are available in Ima's online score report.

How Will Ima Do on the SAT?

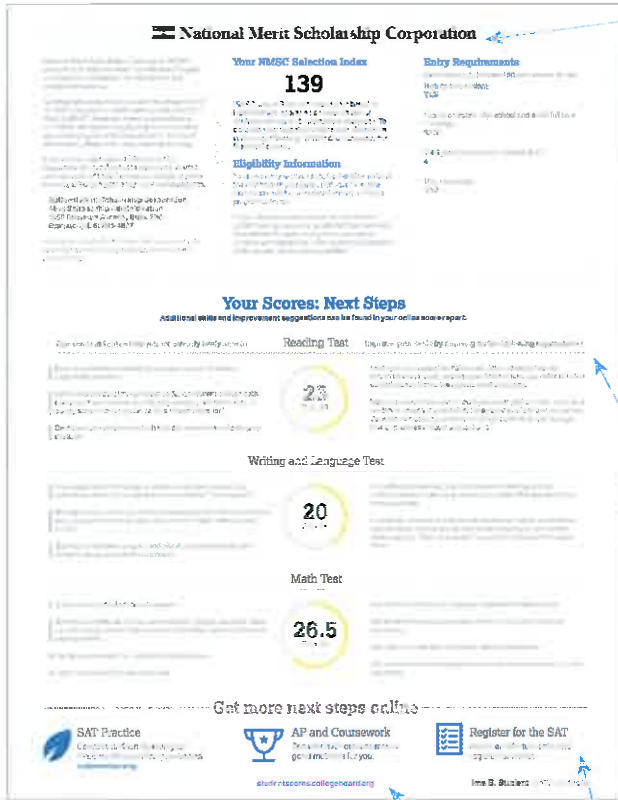
The PSAT/NMSQT and SAT® are scored on a common scale; therefore, if Ima had taken the SAT instead of the PSAT/NMSQT on the same test date, she would have received the same score. When Ima takes the SAT, she will likely have had additional learning from school and practice. Her PSAT/NMSQT results can help Ima focus her efforts in high school to be better prepared for the SAT.

What Are Ima's Score Ranges?

Ima can sign in to her online score report to see her score ranges. They indicate how much her score would likely vary if she took the test repeatedly under the same conditions, with no change in her skill level.



Score Report



Score Report

What Are the Next Steps for Ima?

Under **Get more next steps online**, Ima is directed to studentscores.collegeboard.org to learn how to prepare for the SAT and see her potential for challenging AP[®] coursework.

When Should Ima Take the SAT?

As a junior, Ima should begin planning when she will take the SAT. Most students take the SAT for the first time in their junior year. By planning now, Ima can ensure she has adequate time to practice for the SAT. She can take advantage of practice resources by visiting studentscores.collegeboard.org.

How Can Ima Learn from Her Answers?

Using her score report with her PSAT/NMSQT test booklet, Ima can see the actual questions, correct answers, and difficulty level alongside her own answers. She can use her online score report to review the questions she answered incorrectly or omitted, and to see detailed answer explanations.

For students who tested at a school participating in the test administration study, the actual questions, answers, and answer explanations will not be provided, and the score report will not include the correct answer column.

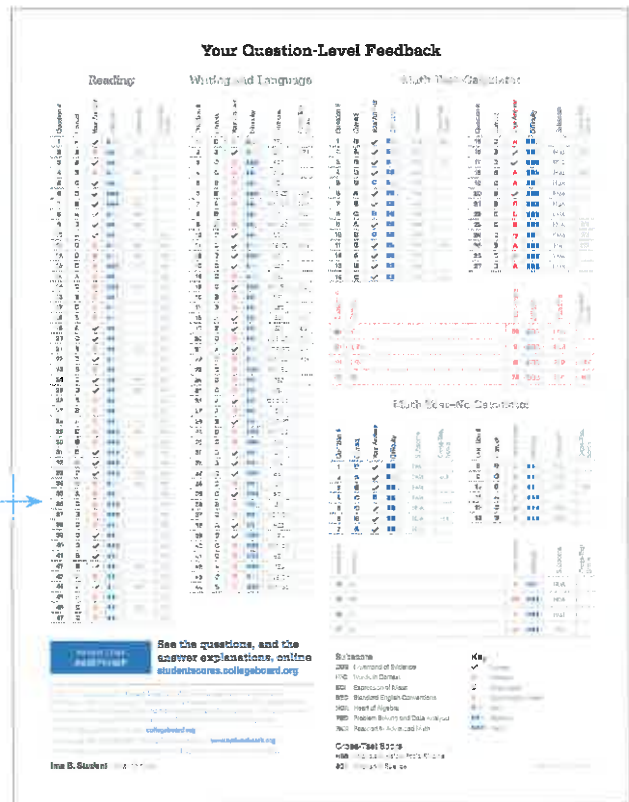
Will Ima Be Able to Enter the National Merit Scholarship Program?

Ima has an NMSC Selection Index score of 139, which is double the sum of her Reading (23), Writing and Language (20), and Math (26.5) Test scores. This Selection Index score is used by National Merit Scholarship Corporation to designate students to be recognized in its National Merit[®] Scholarship Program.

If an asterisk had appeared next to Ima's score, it would mean she does not meet entry requirements for the program. In this case, Ima meets entry requirements and will be recognized if her score places her among the 50,000 high scorers. For entry requirements and information on the steps in the competition, see the *2017 PSAT/NMSQT Student Guide* or visit www.nationalmerit.org.

How Can Ima Improve Her Academic Skills?

Your Scores: Next Steps are based on her test scores, and what general skills similarly performing students understand. Ima can see which skills she performed well on and which she needs to improve. When she goes online and signs in to the full report, she can see additional skills and improvement steps. Ima can also link her account to Khan Academy[®] for personalized practice recommendations.



Score Report